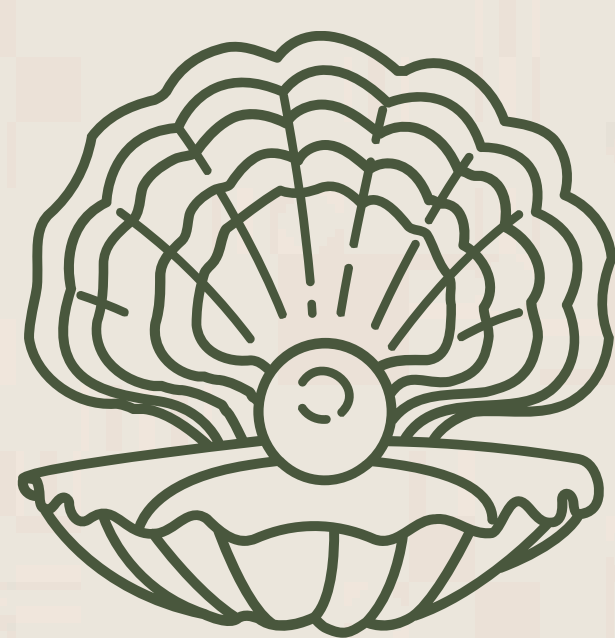


Breathe in. Breathe out.

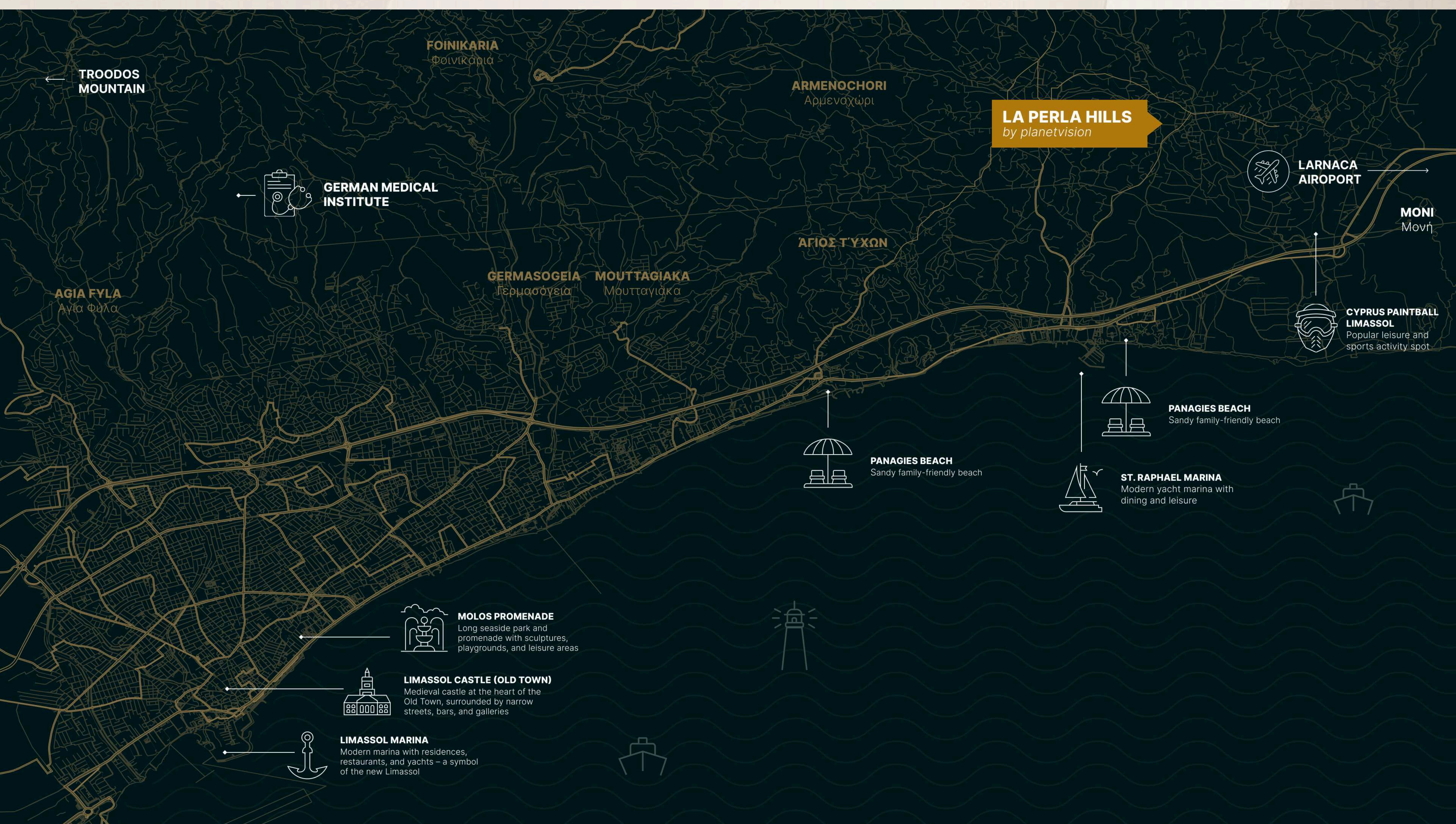


Perla Hills

Location that stands apart



- | | | | |
|--------|----------------------------------|--------|-------------------------------------|
| 5 min | St Raphael Resort & Marina | 22 min | Private International Schools |
| 10 min | Mediterranean Hospital of Cyprus | 25 min | Fasouri Watermania Water Park |
| 10 min | Premium Golf Courses | 30 min | Larnaca International Airport (LCA) |
| 15 min | Limassol Marina | 40 min | Paphos International Airport (PFO) |
| 20 min | Limassol City Center | | |



Perla Hills

Dive into calmness

Where nature opens the heart and offers peace



Perla Hills

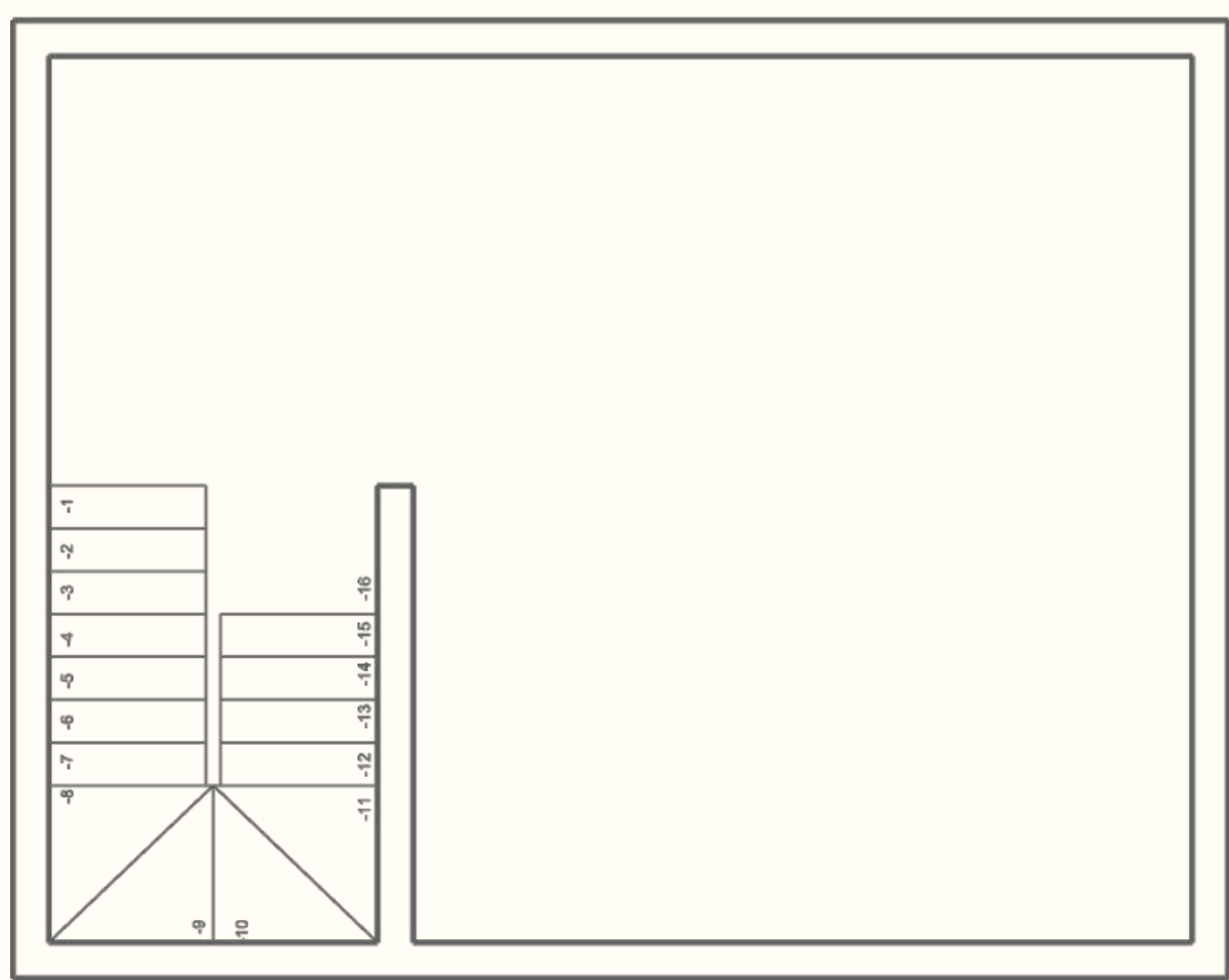
Masterplan



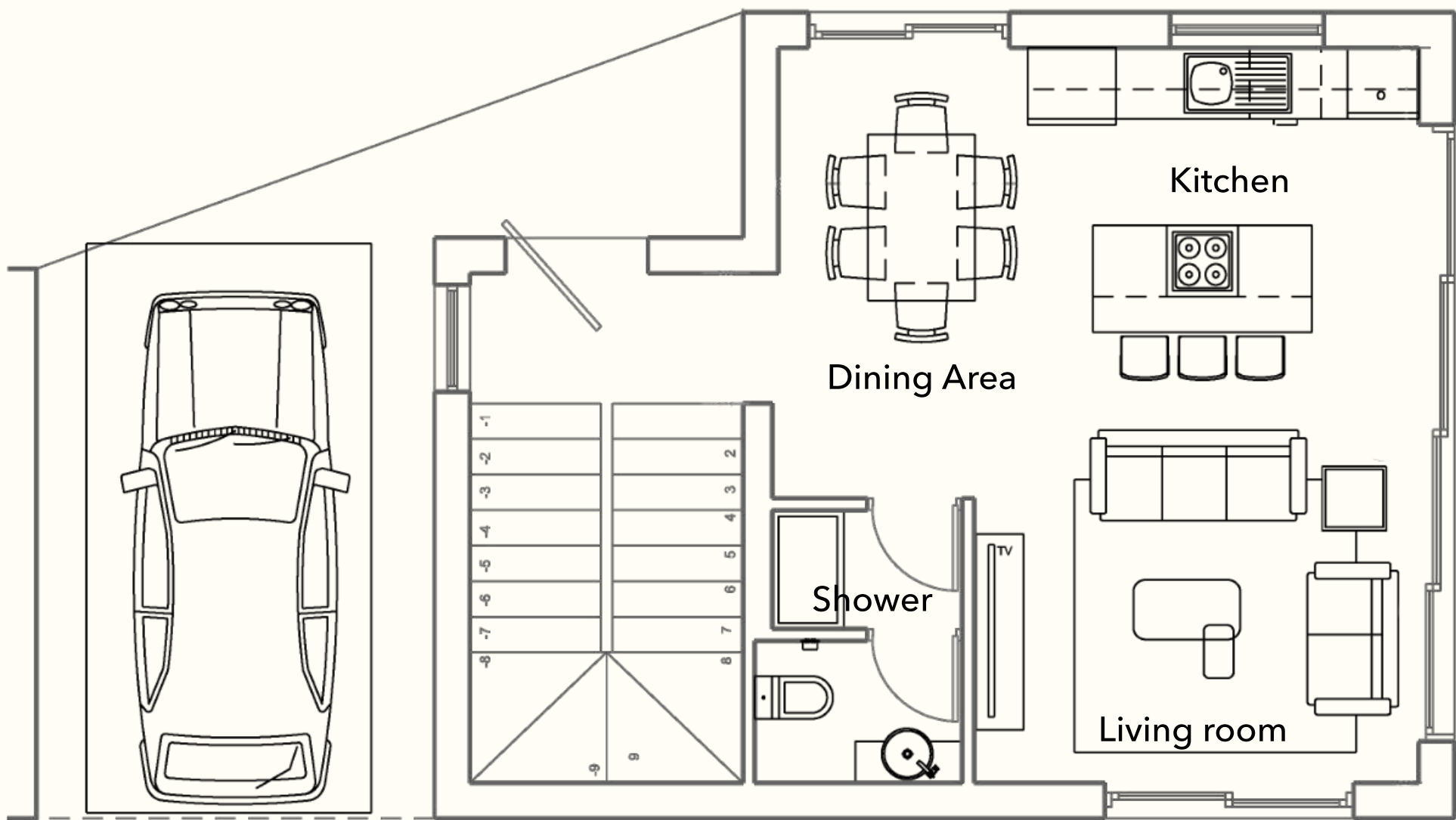
Perla Hills



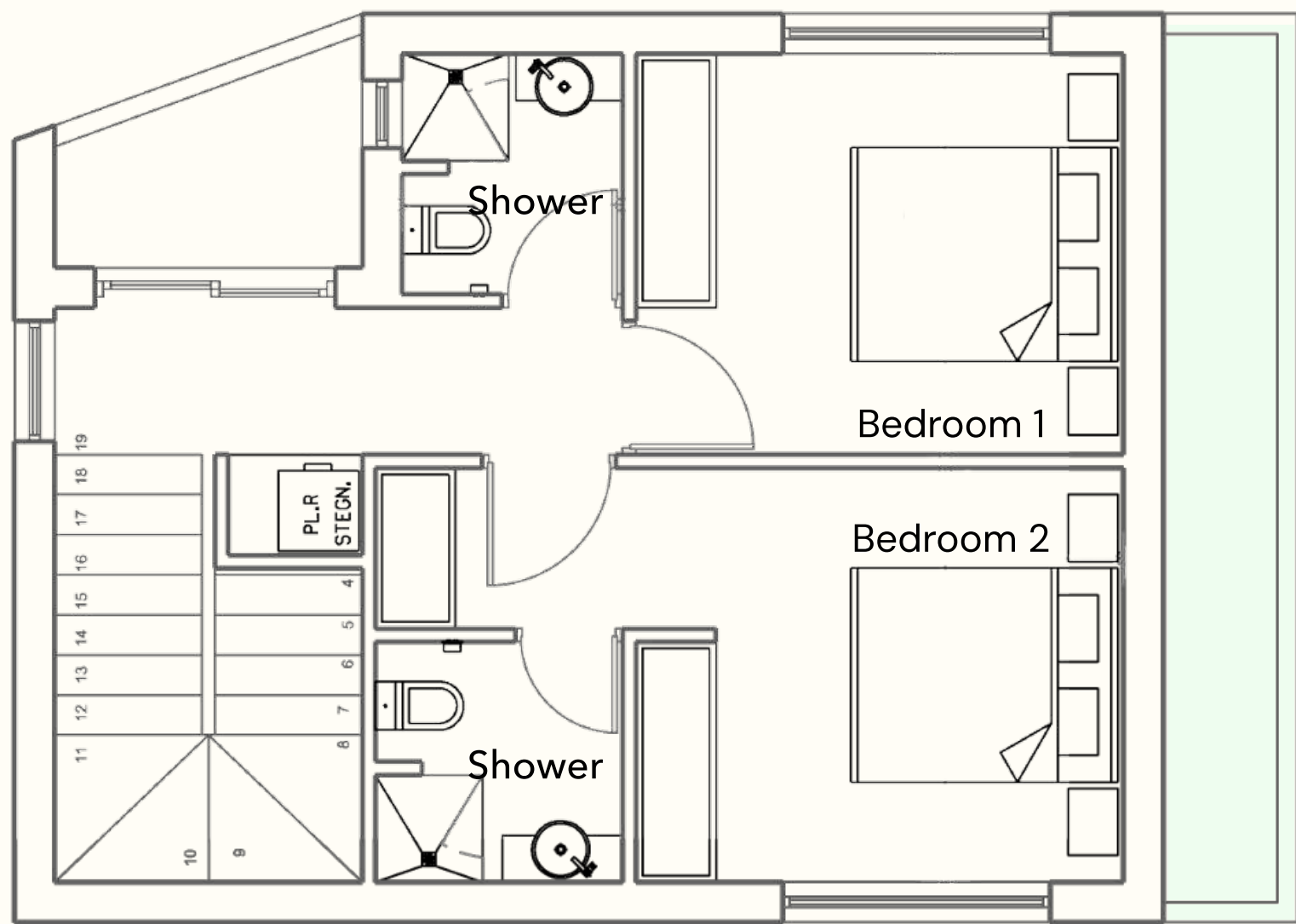
Villa Type A



Lower Ground Floor

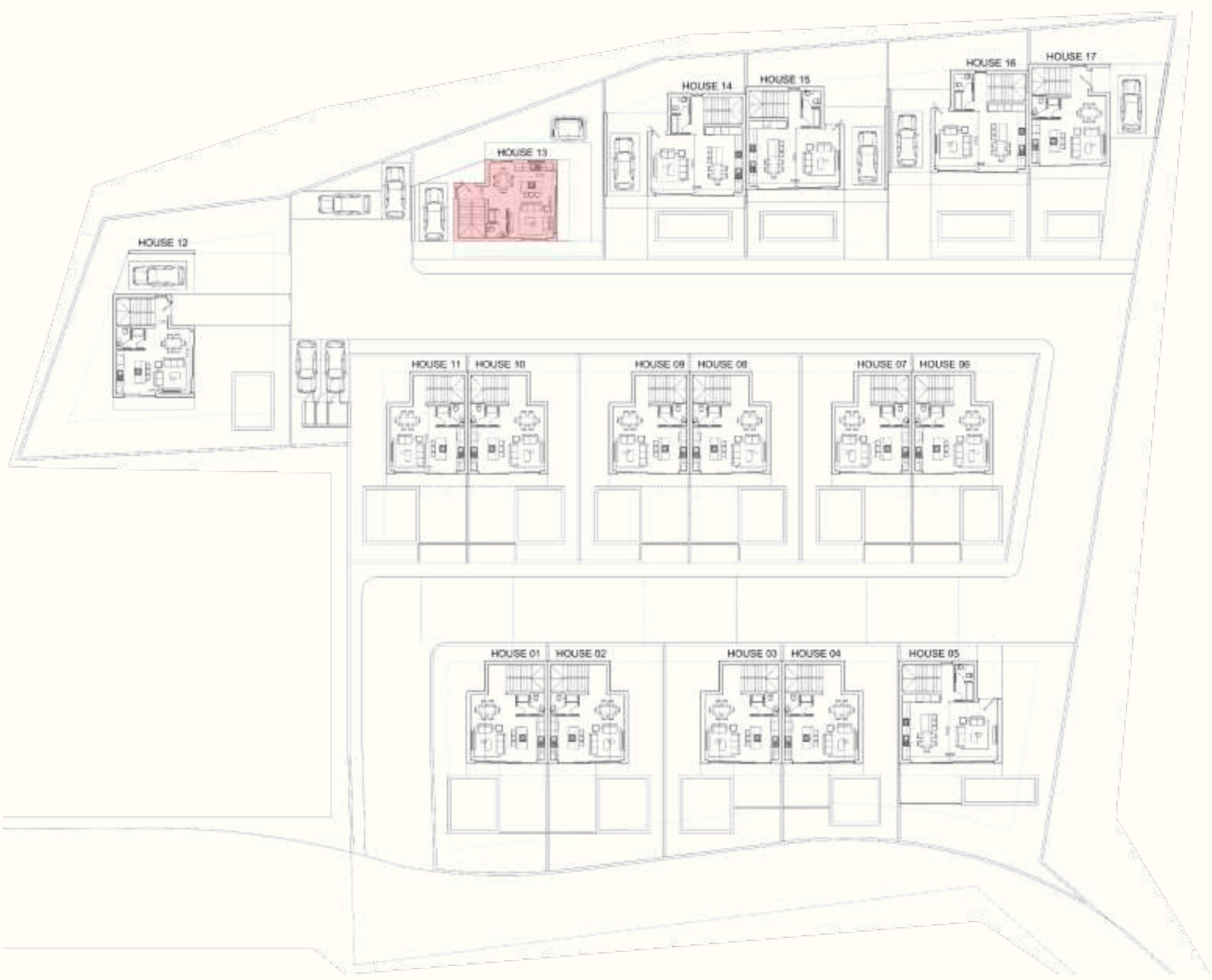


Ground Floor



First Floor

Perla Hills



Bed: 2

Bath: 2

LGF: 57 m²

Parking: 18.8 m²

Indoor: 109.1 m²

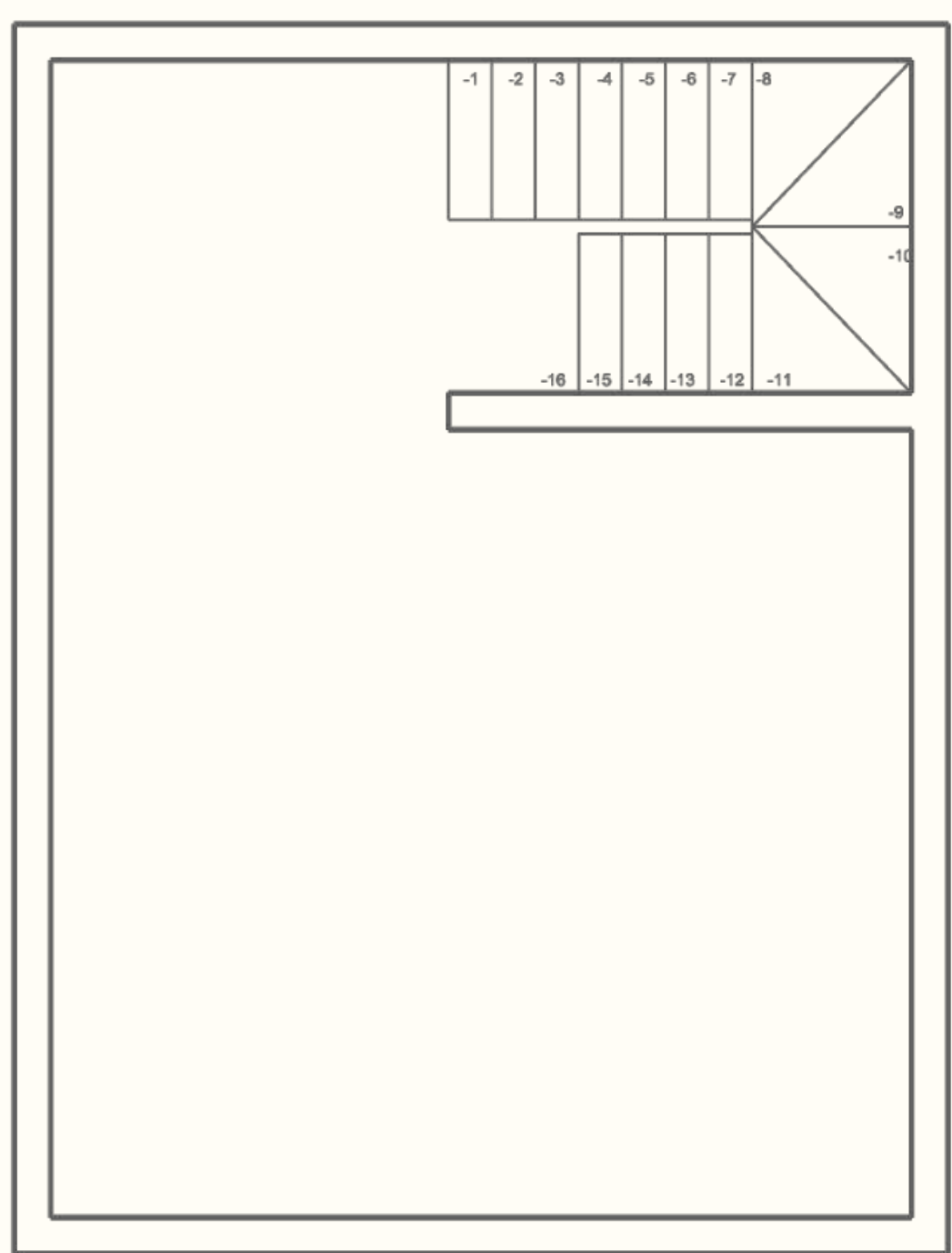
Covered Veranda: 25.2 m²

Total Covered Area: **210.1 m²**

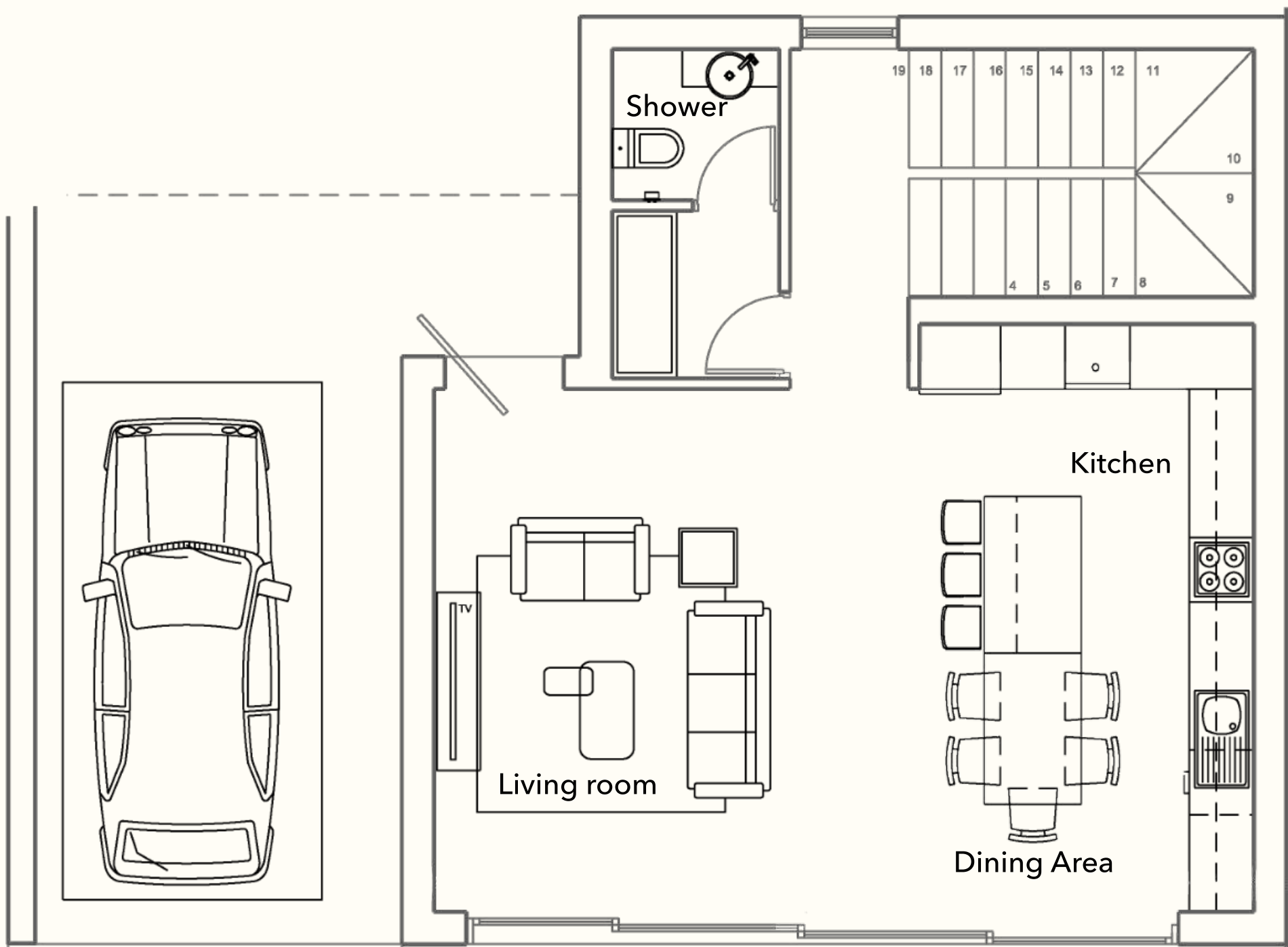


Villa Type B

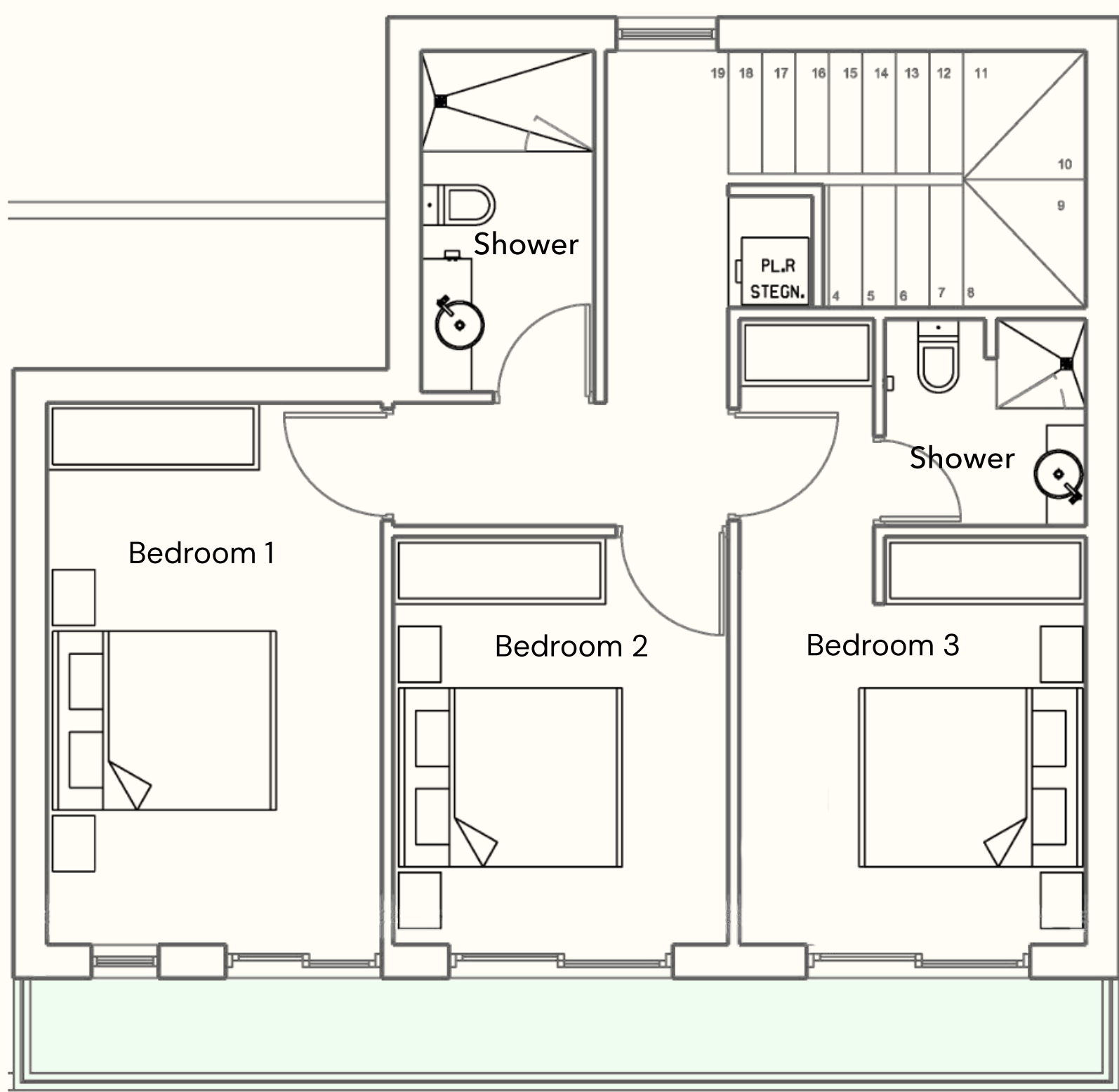
HOUSE 05, 14, 15, 16



Lower Ground Floor

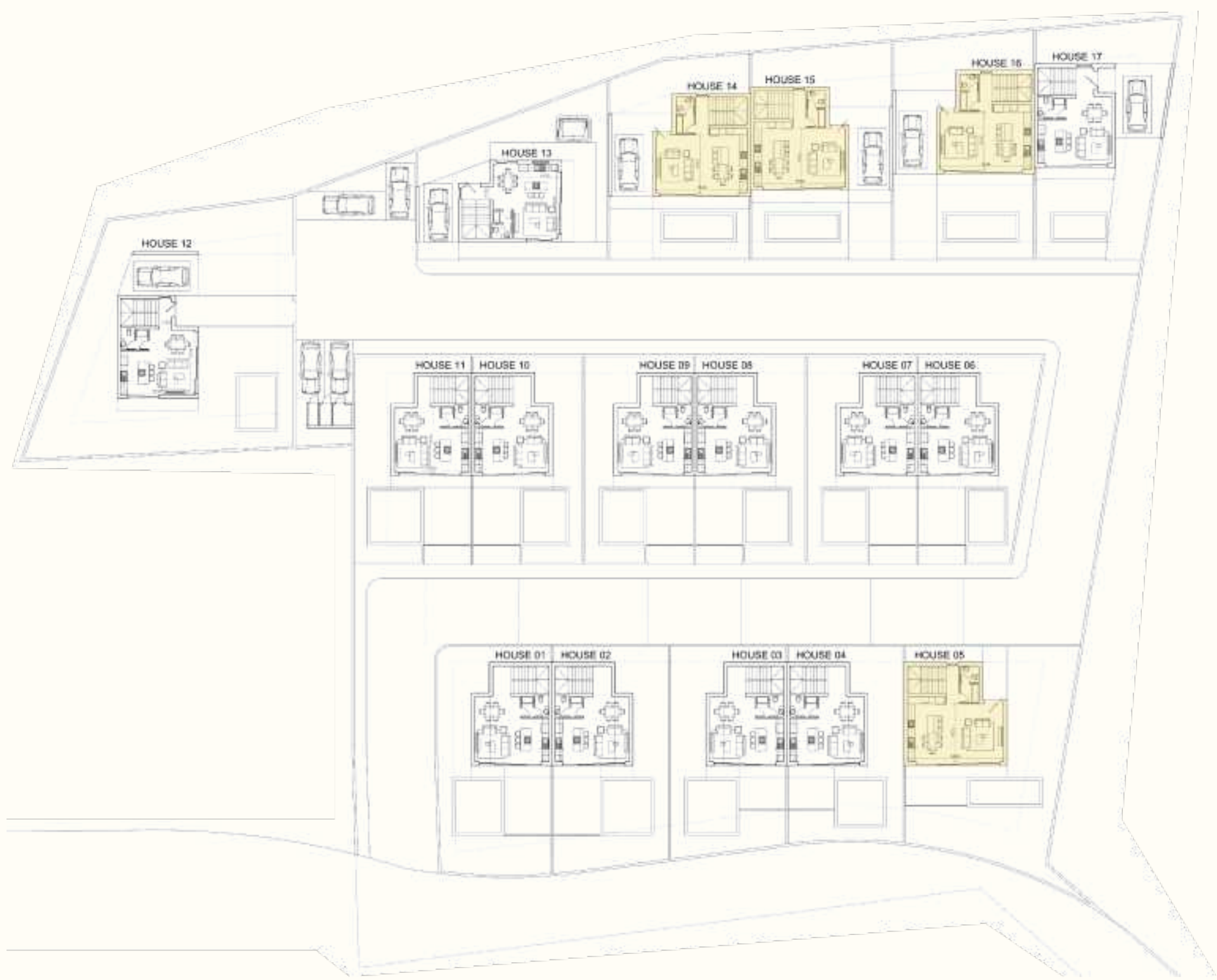


Ground Floor



First Floor

Perla Hills



Bed: 3

Bath: 2

LGF: 53.9 m²

Parking: 28 m²

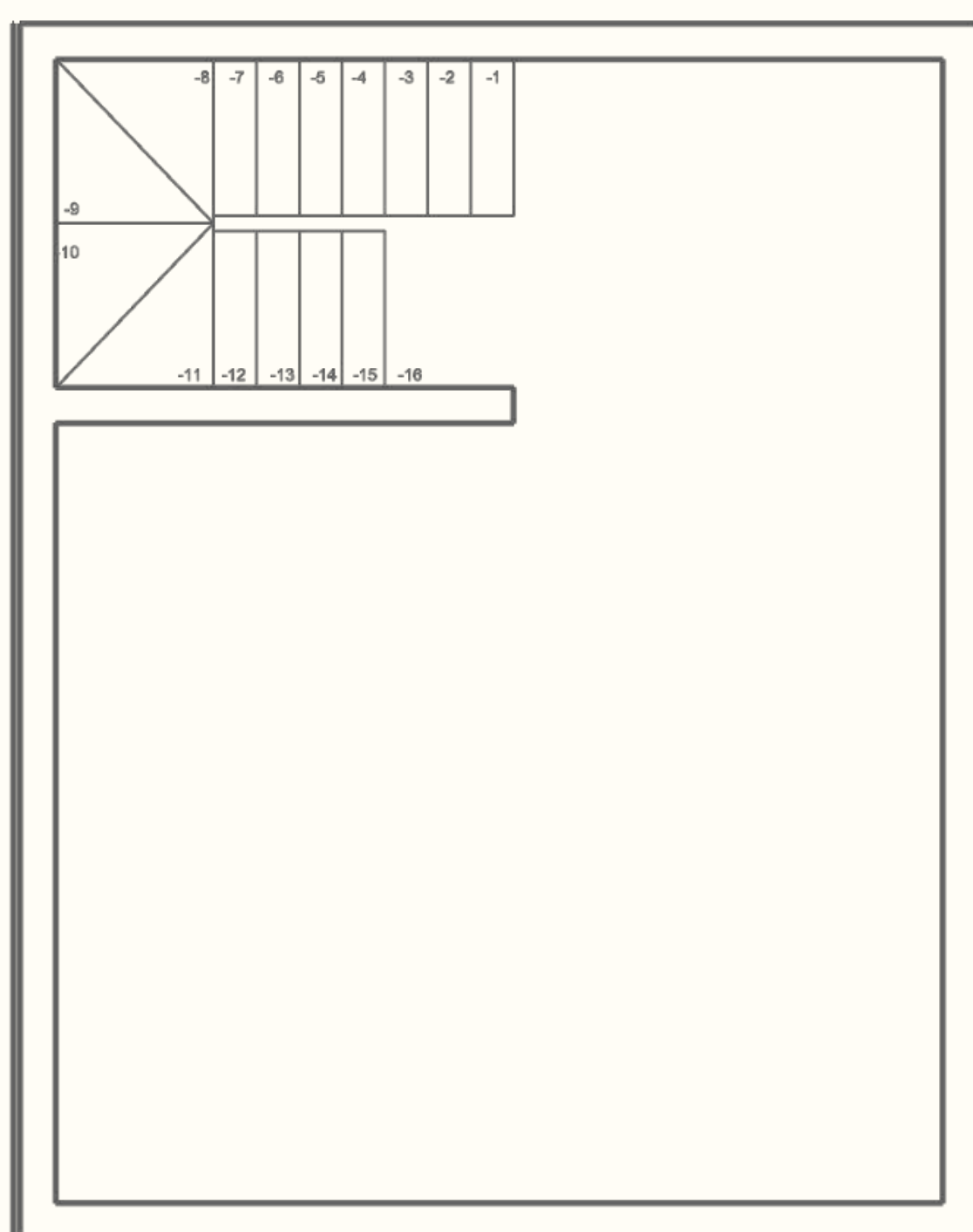
Indoor: 139.8 m²

Covered Veranda: 17.5 m²

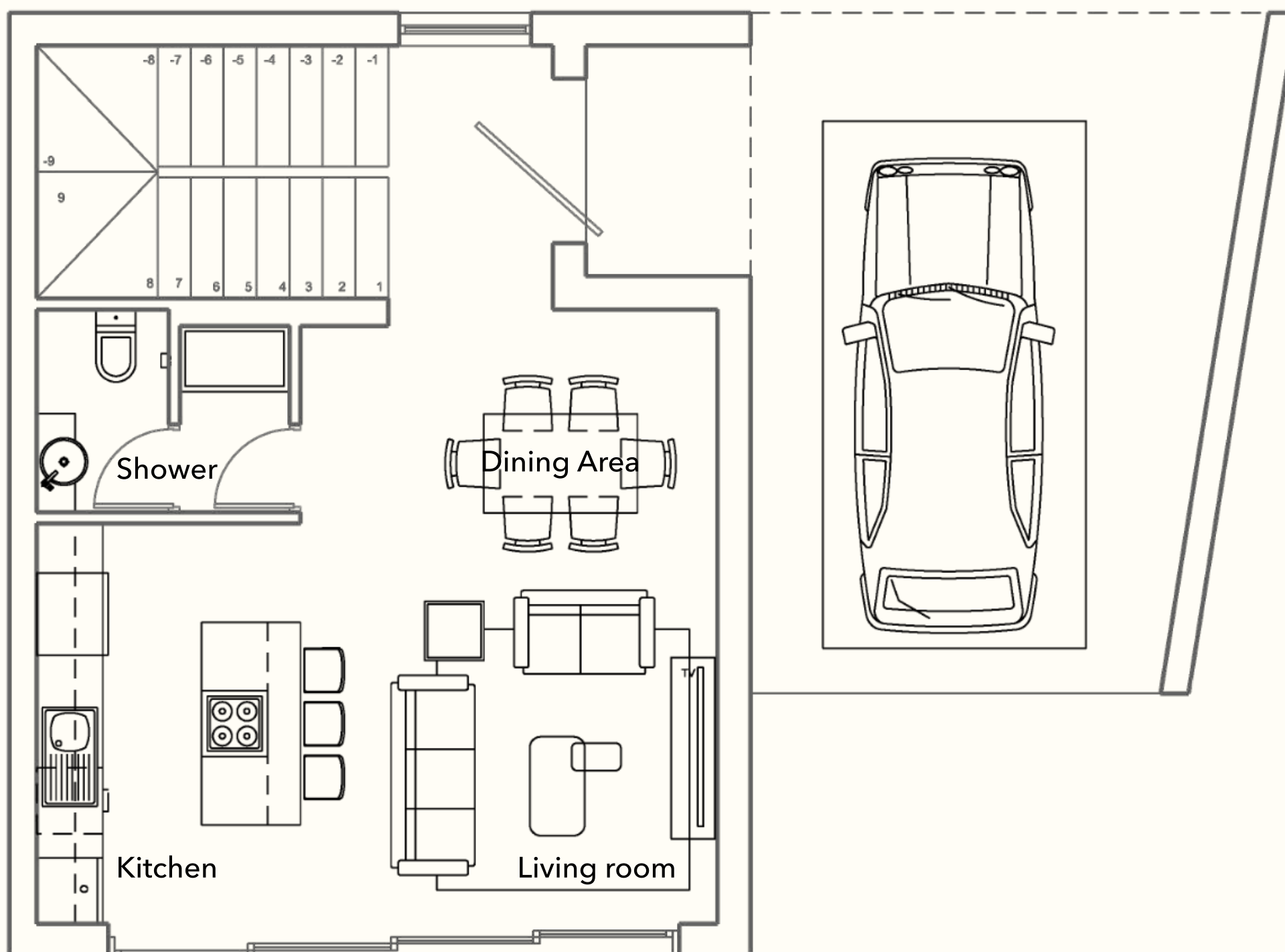
Total Covered Area: **239.2 m²**



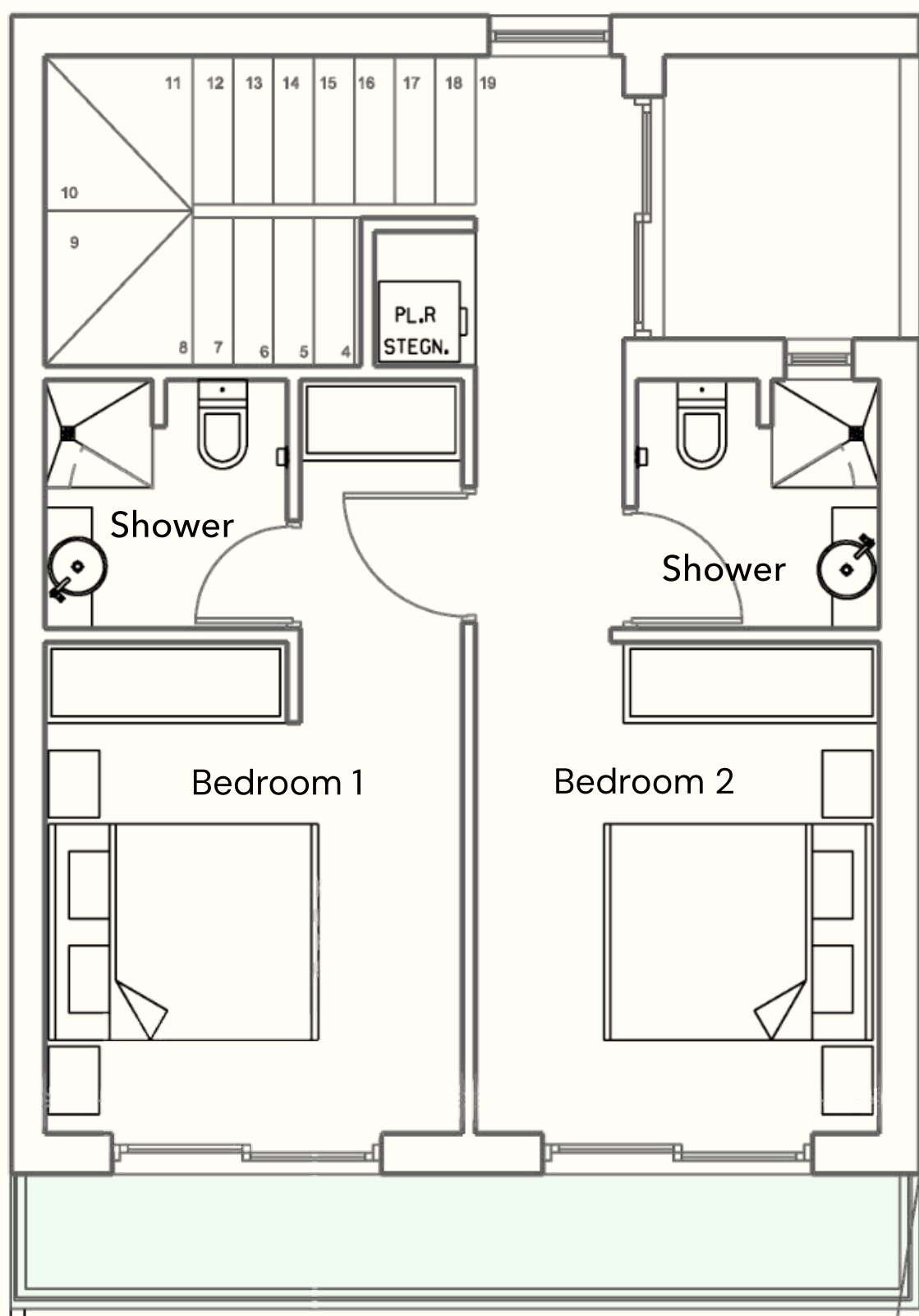
Villa Type C



Lower Ground Floor

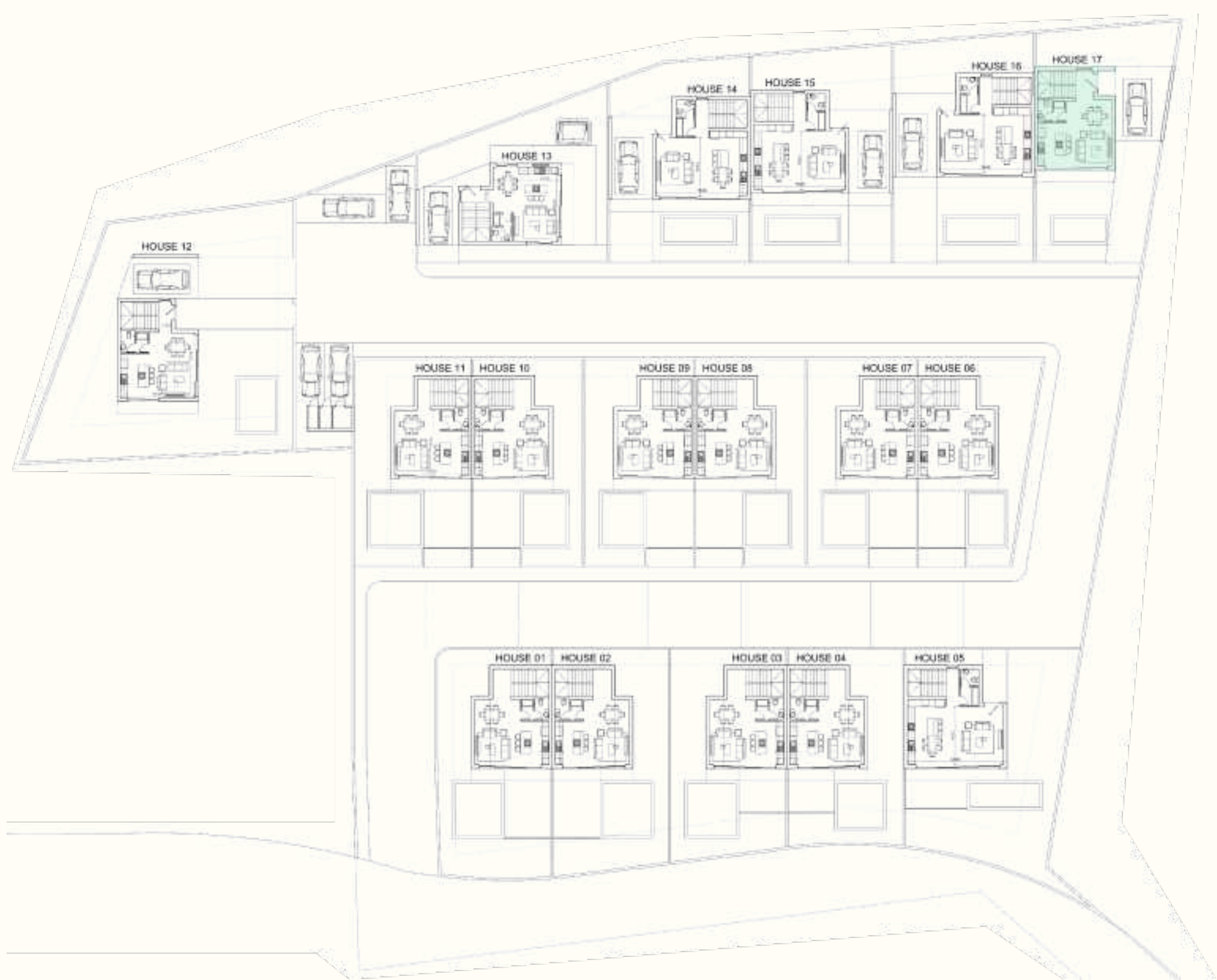


Ground Floor



First Floor

Perla Hills



Bed: 2

Bath: 2

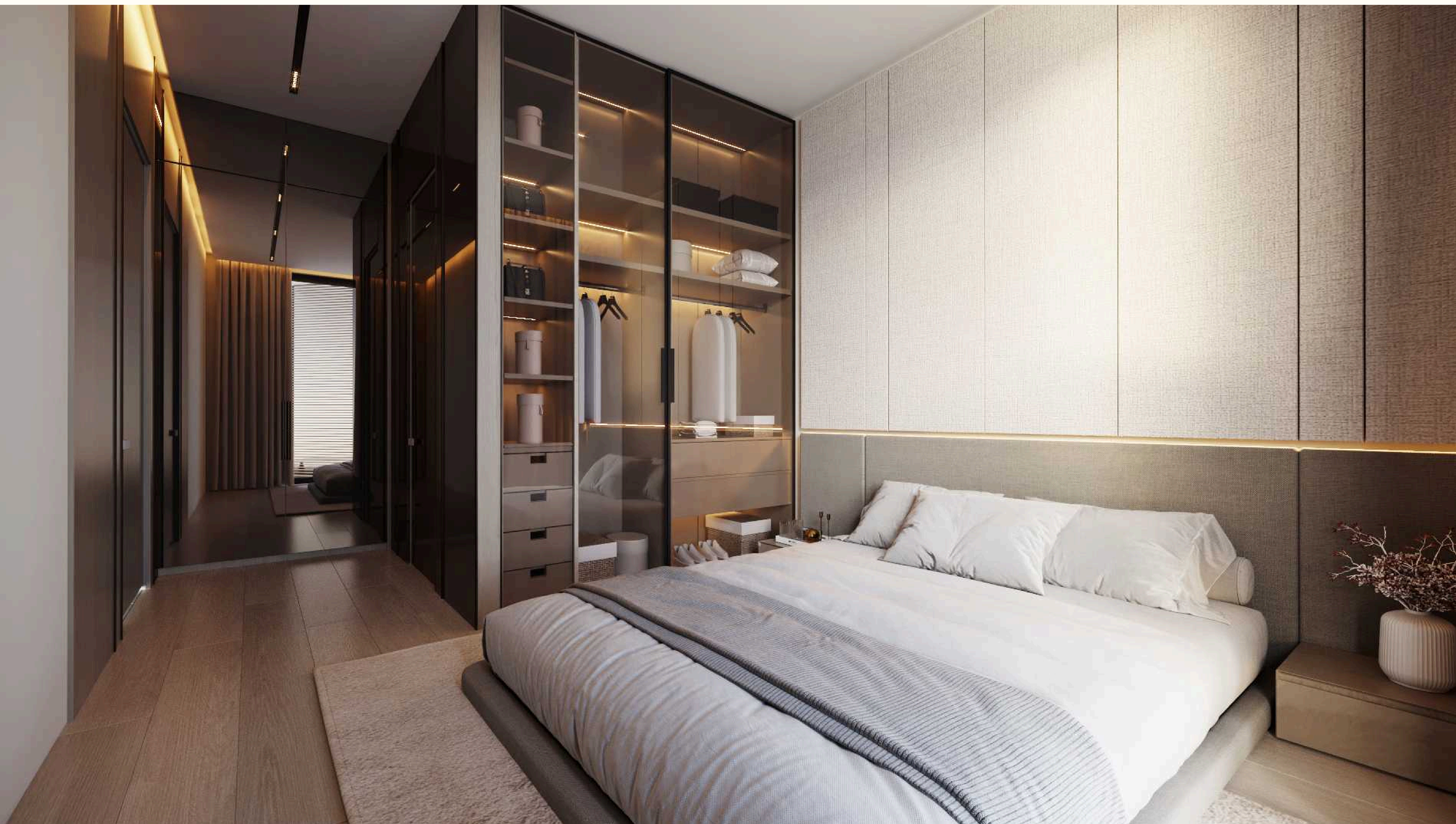
LGF: 56.3 m²

Parking: 22 m²

Indoor: 109.8 m²

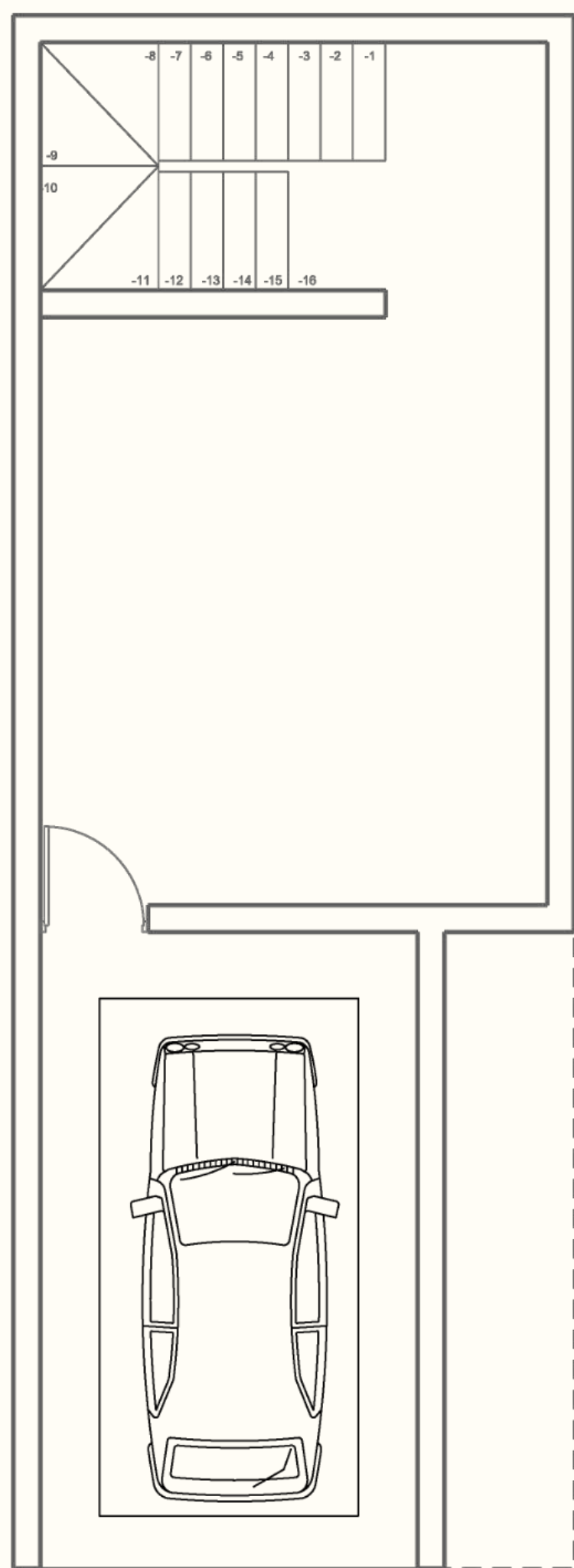
Covered Veranda: 27.6 m²

Total Covered Area: **215.7 m²**

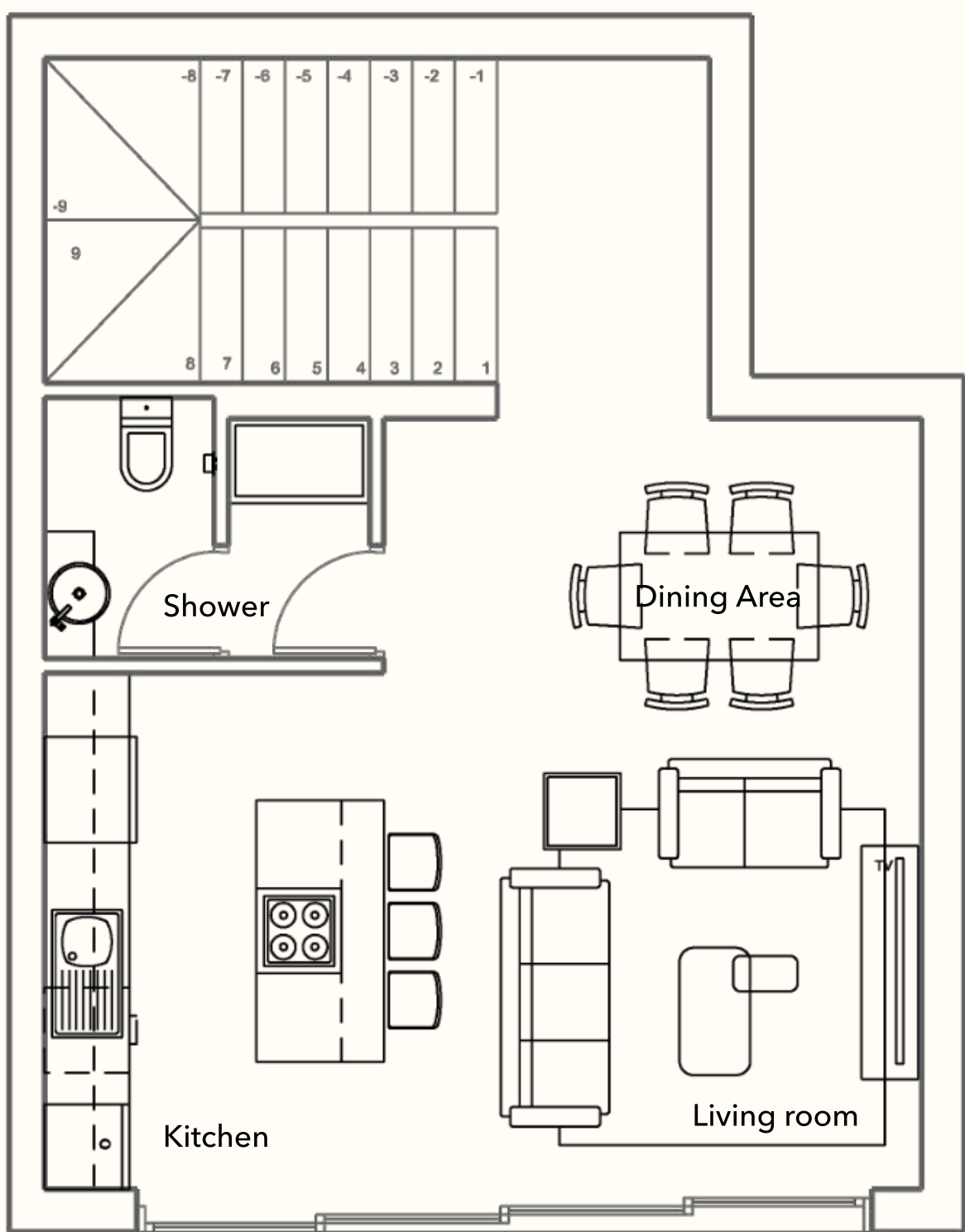


Villa Type C2

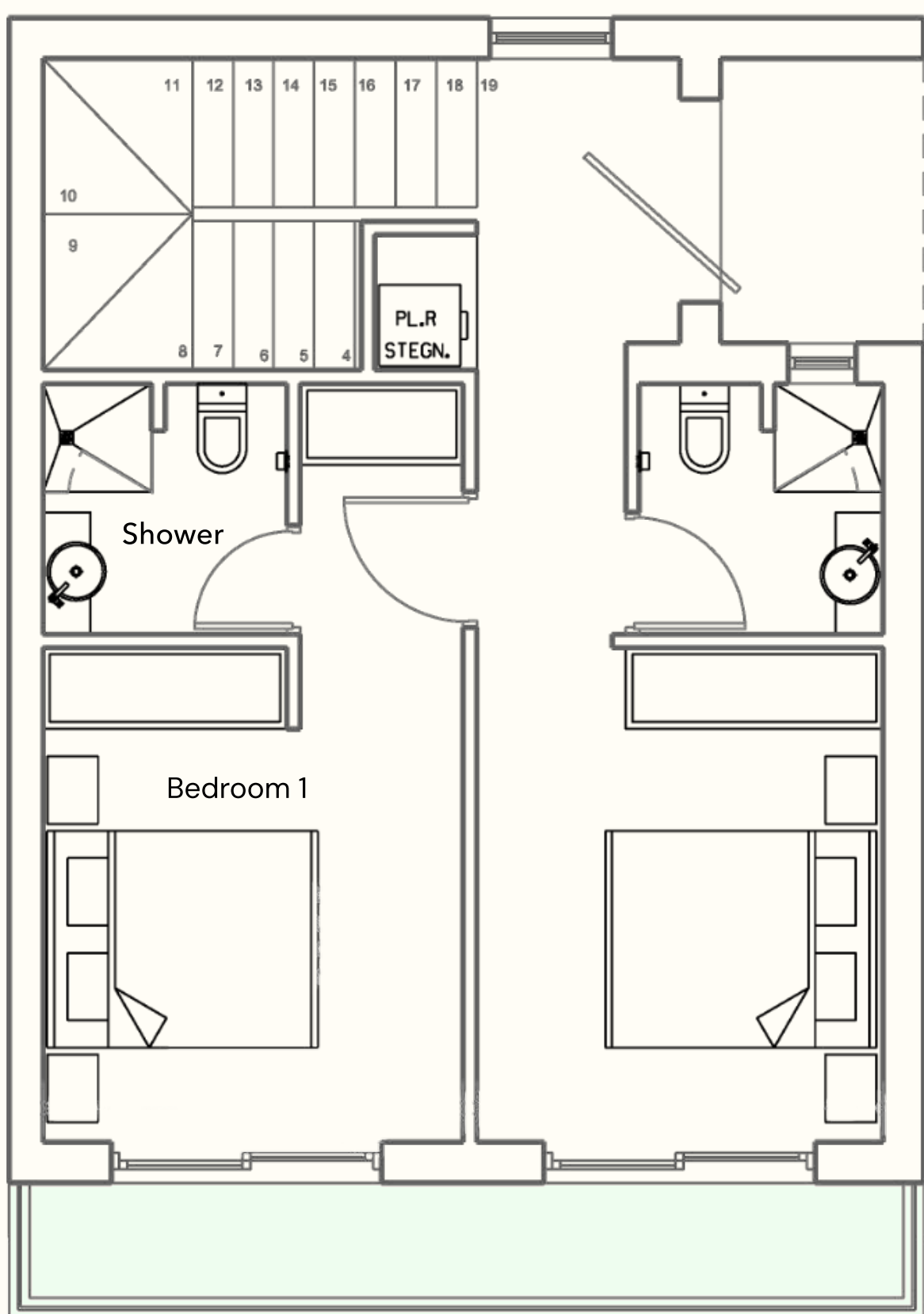
HOUSE 01, 02, 03, 04, 06, 07, 08, 09, 10, 11



Lower Ground Floor

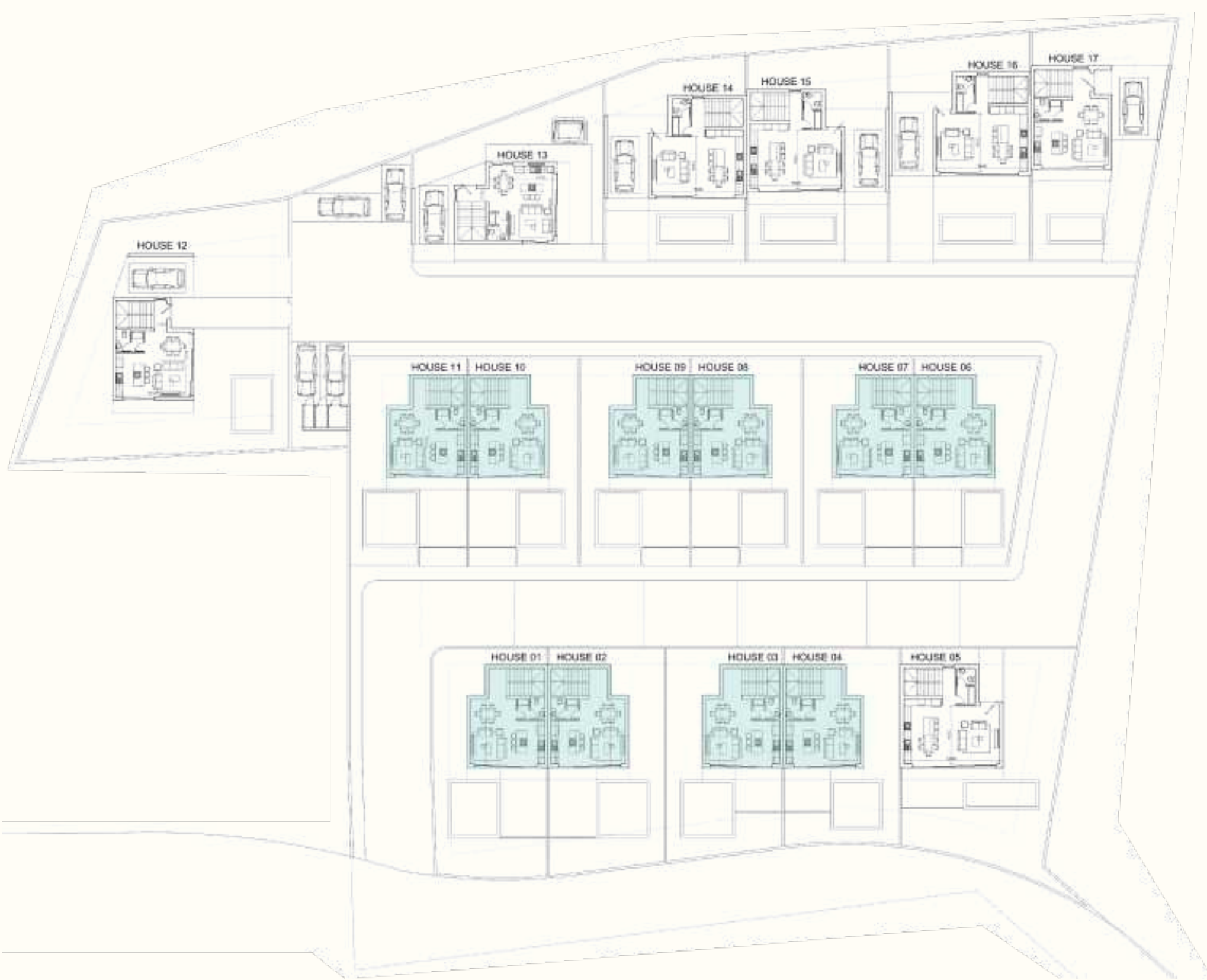


Ground Floor



First Floor

Perla Hills



Bed: 2

Bath: 2

LGF: 43.9 m²

Parking: 23.8 m²

Indoor: 95.4 m²

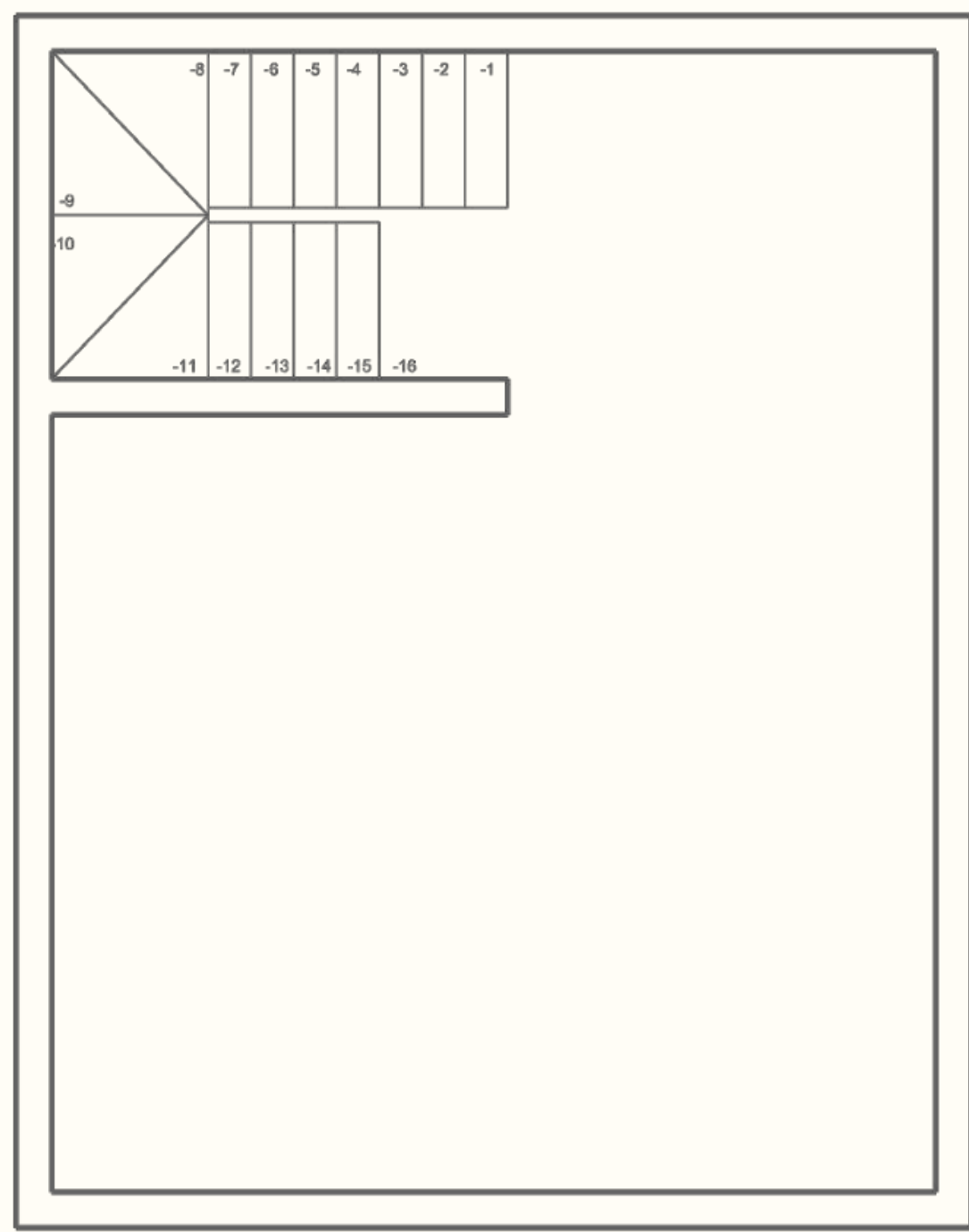
Covered Veranda: 23.4 m²

Total Covered Area: **186.5 m²**

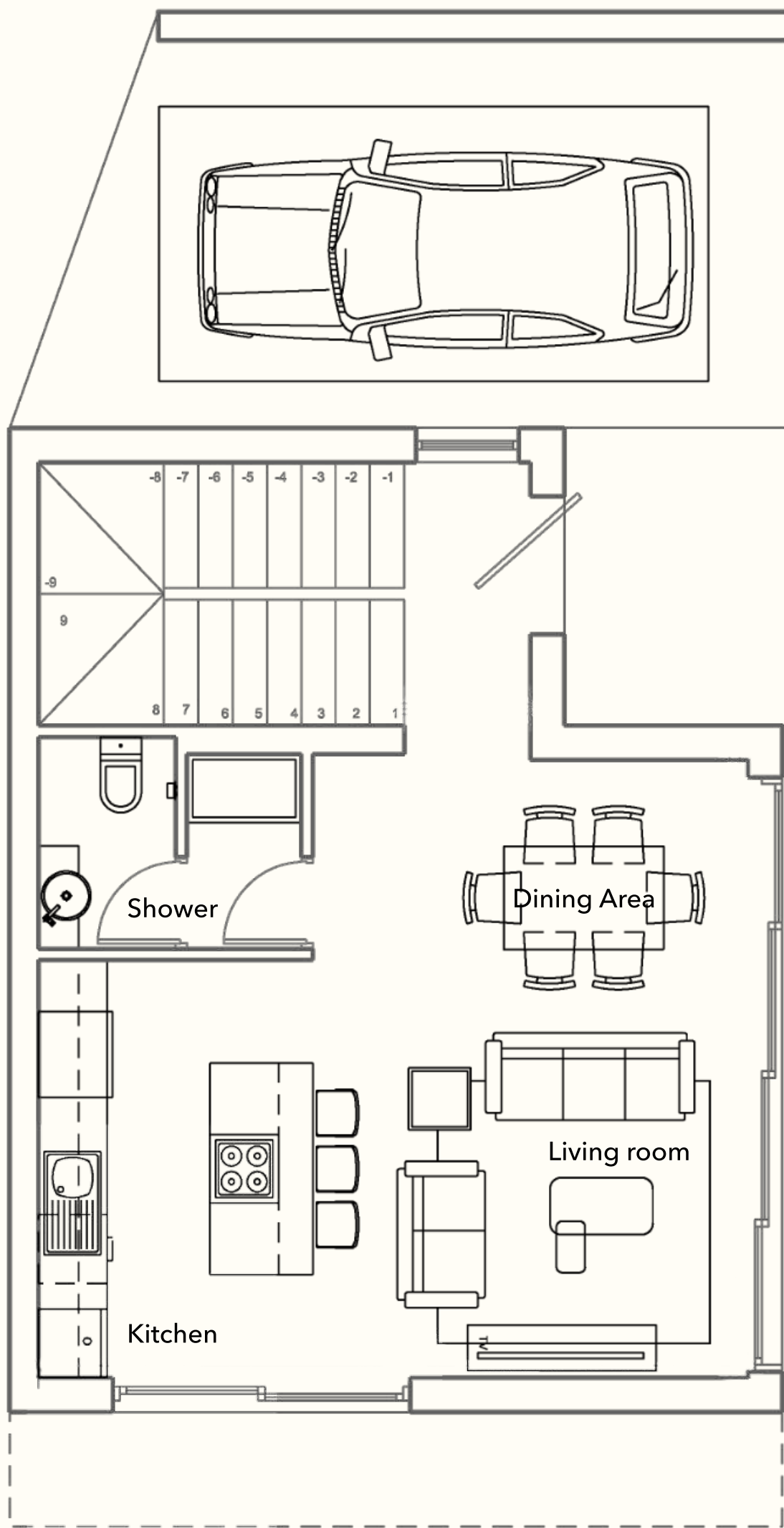


Villa Type C3

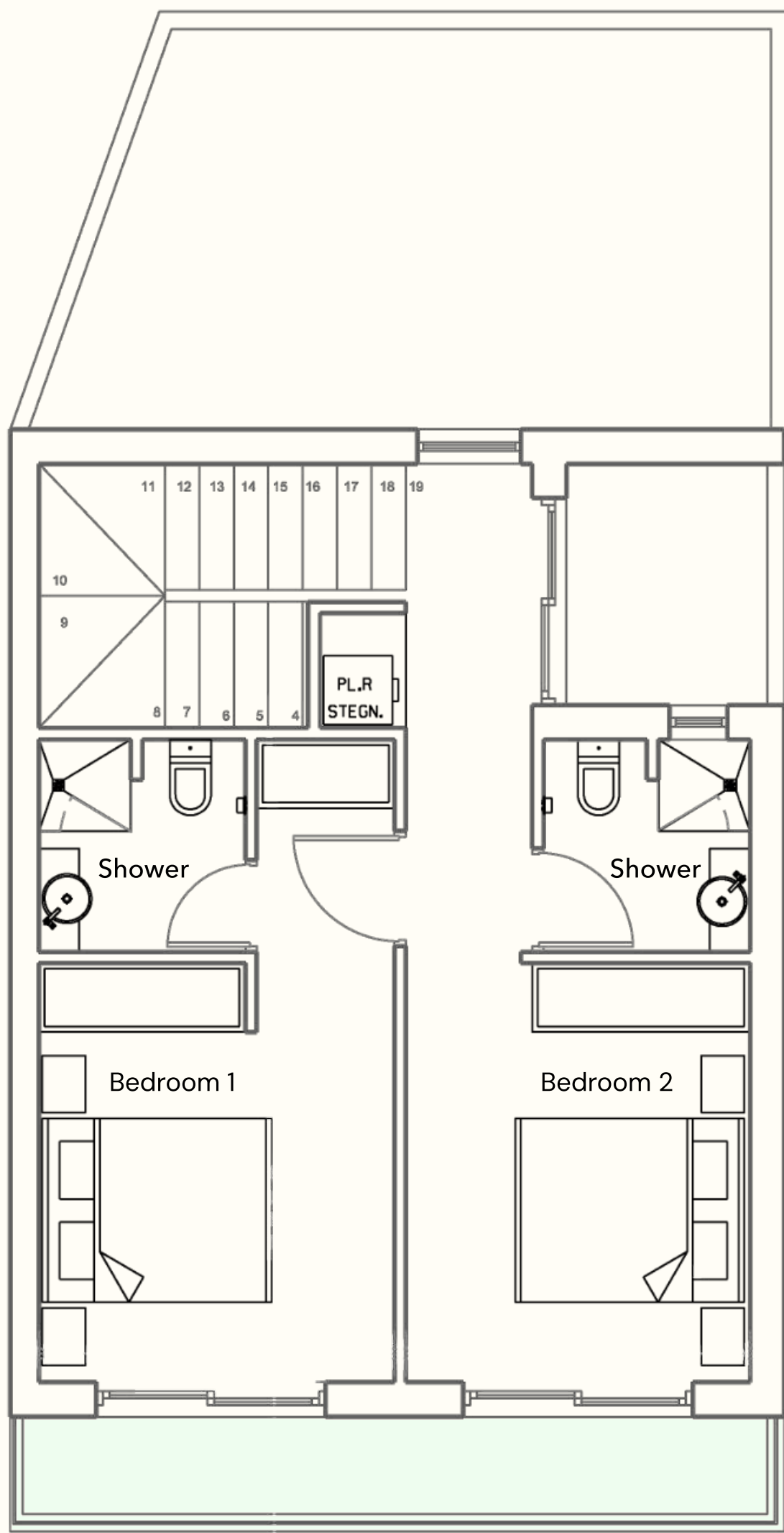
HOUSE 12



Lower Ground Floor

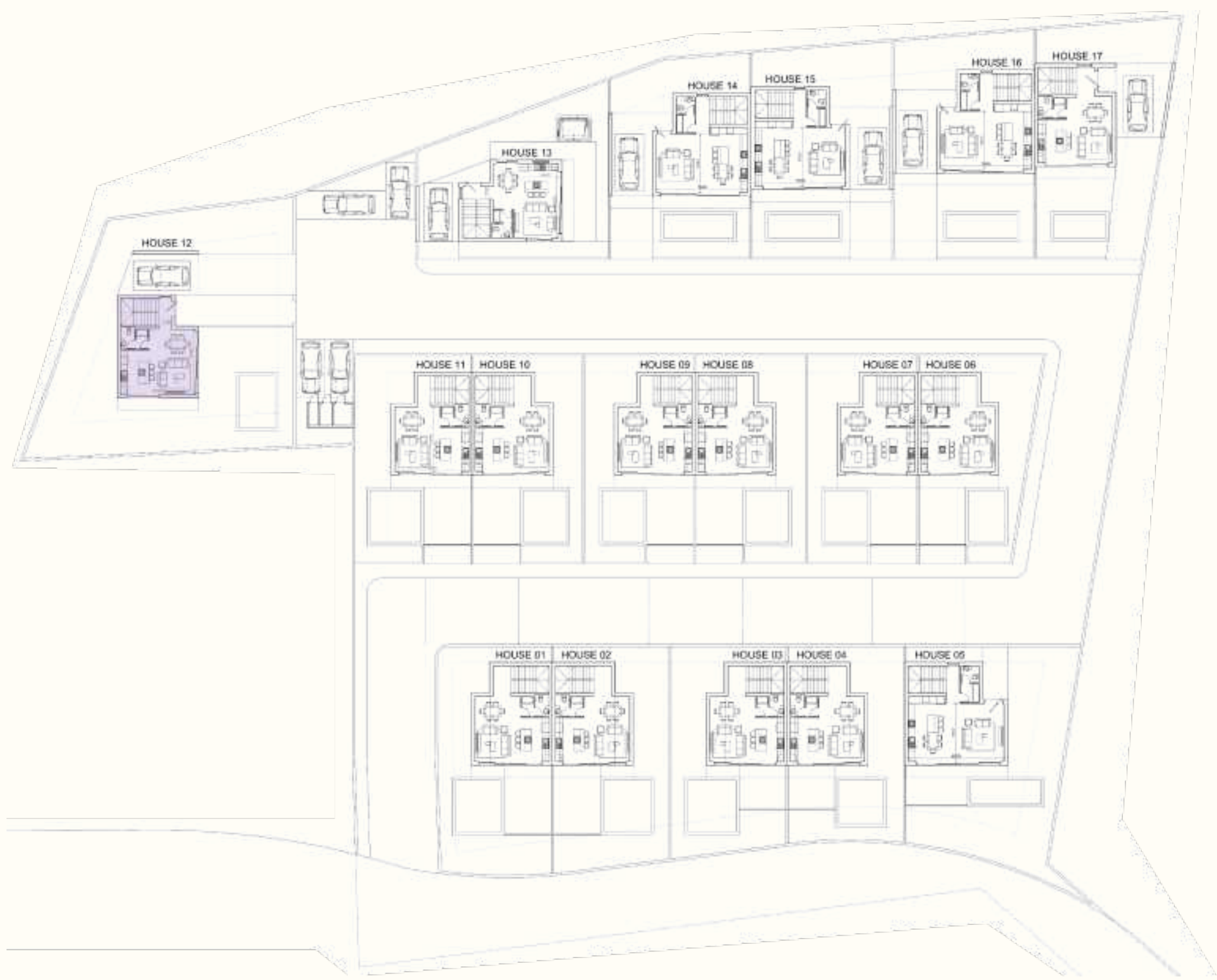


Ground Floor



First Floor

Perla Hills



Bed: 2

Bath: 2

LGF: 56.3 m²

Parking: 22 m²

Indoor: 109.8 m²

Covered Veranda: 27.6 m²

Total Covered Area: **215.7 m²**



PLANETVISION

Register your interest

+357 7777 8727

Email us at sales@planetvision.com, visit 4, Amathountos Ave.,
Pyrgos, Limassol or explore our website planetvision.com



The developer retains the right to make modifications. All measurements and drawings are approximate.
This information may change without notice. Scale drawings, artistic renderings, landscaping and images are for illustrative purposes only and may be subject to change without notice.